




NAVFone Application Installation

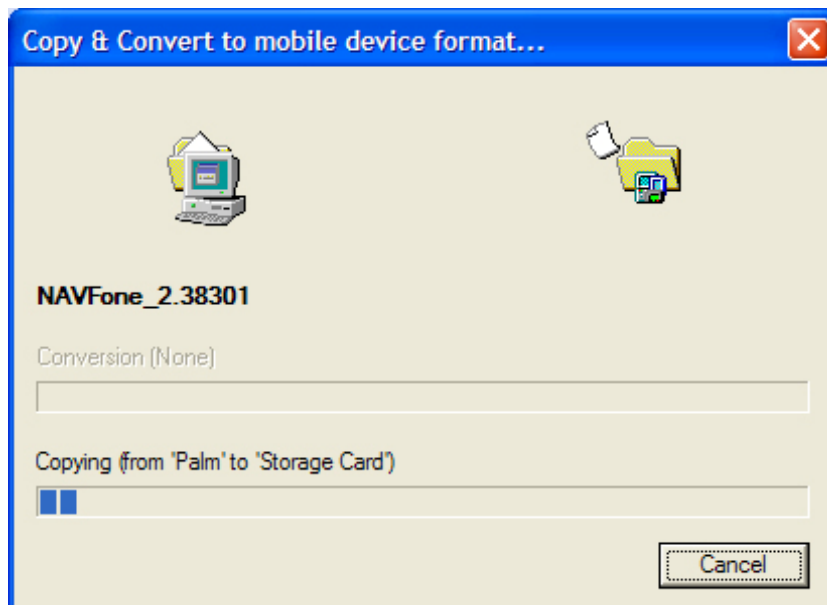
- Setup
 1. Install ActiveSync if it has not been installed on your computer.
 2. Connect the PDA cradle to the PC serial or USB port
 3. Place the PDA on the cradle and power on the PDA
 4. ActiveSync will initiate connection

When connecting the PDA to the PC for the first time, you will be prompted to install a driver from a CD provided with the PDA.

Step 1: Download and save the installer file to a PC.

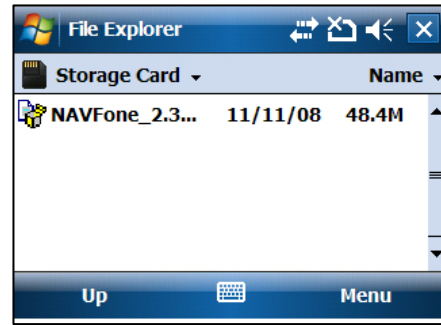
Name	Size
 NAVFone_2.38301.CAB	49,645 KB

Step 2: Transfer the installer to the Windows Mobile device.

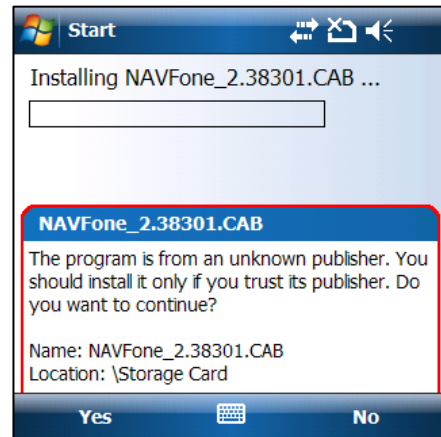




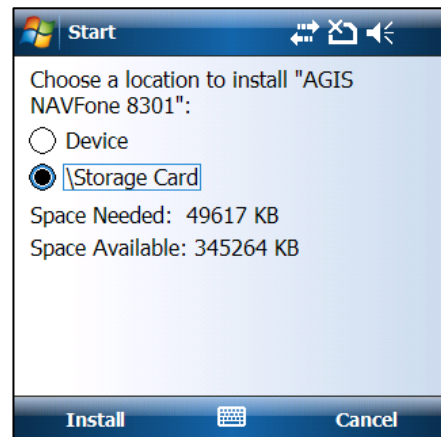
Step 3: Using the “**File Explorer**” on Windows Mobile device, browse into the folder where the installer was copied. Tap on the “**NAVFone_2.2...**” to start the installation.



Step 4: Tap on “**Yes**”.

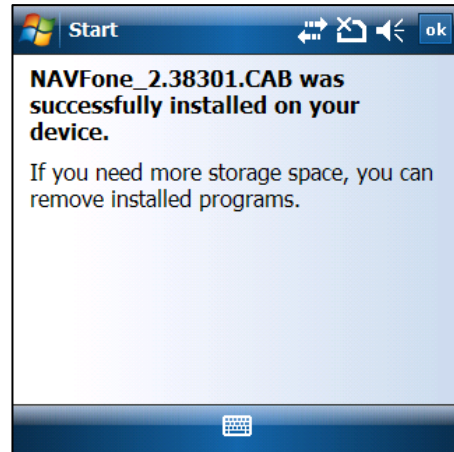


Step 5: Select the “**Storage Card**” location. Ensure there is sufficient memory space on the selected location. Tap on “**Install**” to continue



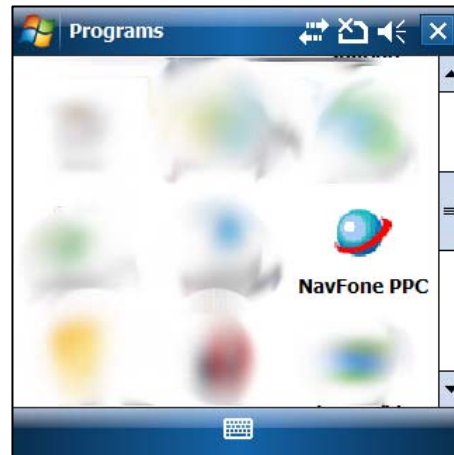


Step 6: Installation complete.

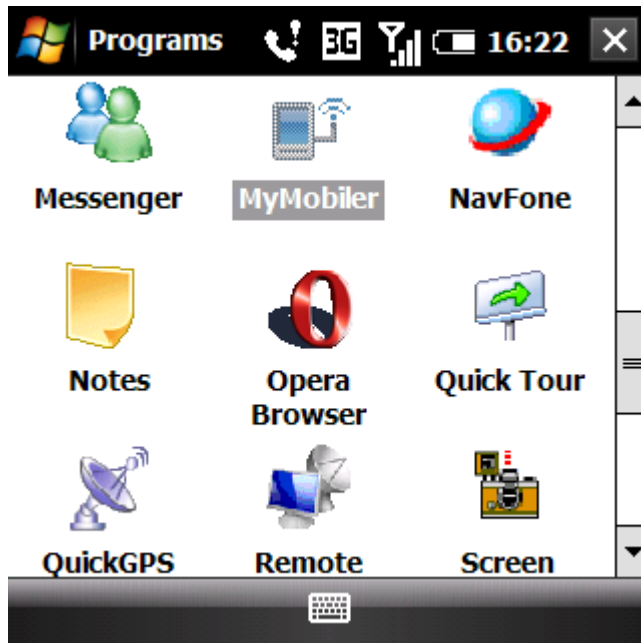


Step 7: The NAVFone icon is now available on the Programs menu.

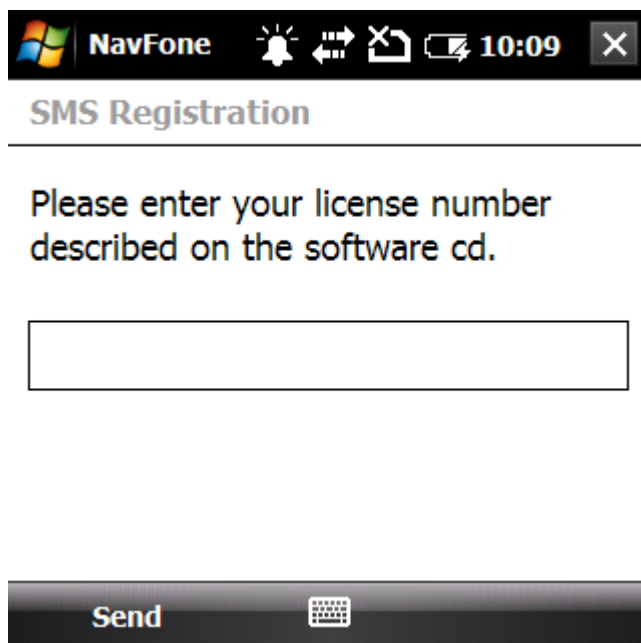
Upon completion, run the NAVFone application to activate.



1. Launching the application & activation



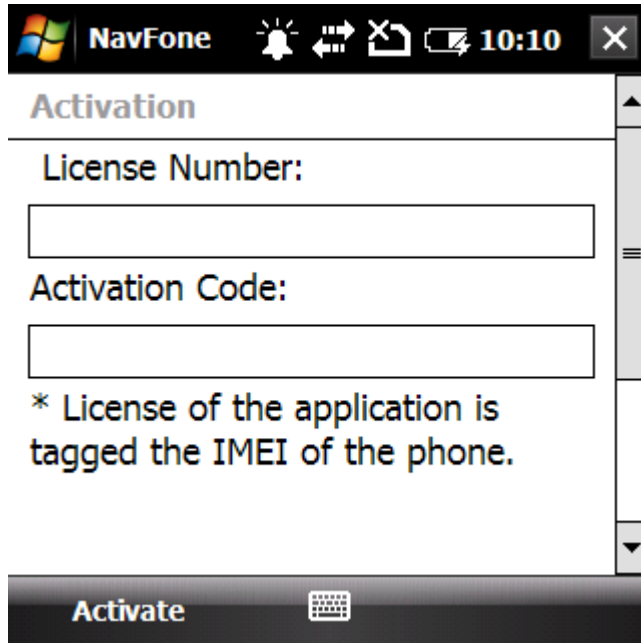
Go into **Start Menu > Programs > NAVFone**



Enter the License number* and then tap Send. Please wait a while the SMS Activation is being process.

*The license number can be obtained from the NAVFone scratch card provided. (Take note it is case sensitive)

The activation is done via SMS. Normal SMS chargers apply.



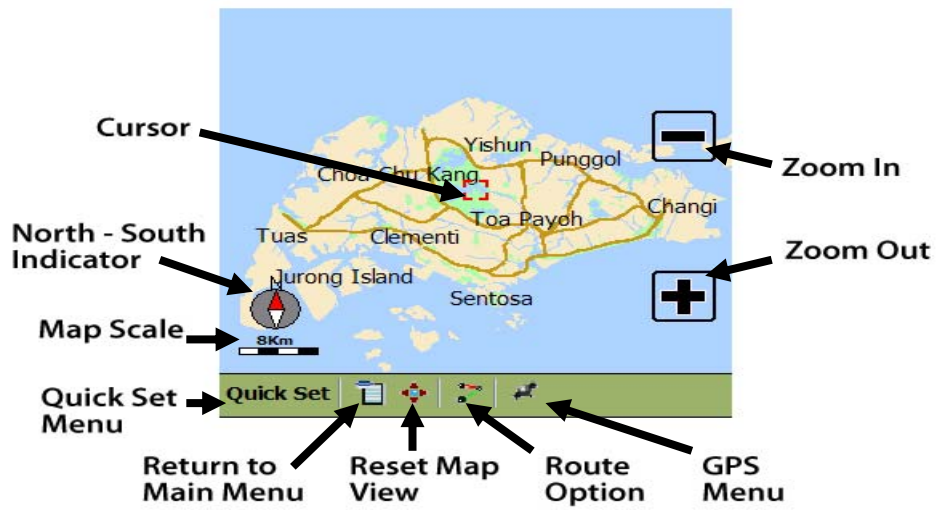
Once the Activation SMS received, an activation screen will appear, similar to the image on the left.

Enter the License Number and Activation Code and tap on Activate.



Once activated, tap on the map button to have it loaded.

2. The Navigation Views



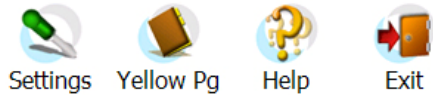
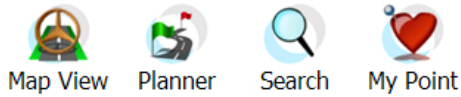
3. Knowing the Functions



The NAVFone PPC Main Menu.

BUTTON	DESCRIPTION	FUNCTION
 Map View	Map View	To view, find and locate points-of-interest on a map
 Planner	Planner	Route planning / Navigation
 Search	Search	Queries a location and displays it on the map
 My Points	My Points	Listing of saved favorites
 Settings	Settings	Change various settings
 Yellow Pg	Yellow Pages	Access YP search features
 Help	Help	Access help topics
 Exit	Exit	Exit Application

4. Search



Go to Main Menu > Search

From Search, user may select search by category shown.

To see all results, select **Search All Layers**.

Available Search Categories

- Search All Layer
- Address & Buildings
- Automobile (Car)
- Banks & ATM
- Community Council
- Entertainment & Recreation
- Food
- General Services
- Government
- Hotel & Resorts
- Medical
- Others
- Petrol
- Police and Fire Rescue
- Residential
- Road
- Shopping
- Tourist Information
- Transport
- Worship



 State/City

 District


Once the category selected, enter a **keyword** to such as the postal code, road name or building name.

Tap on Search.



Dist	Name	Page 1 of 15
6.4 km	Suntec City Tower One @ Singapore, 7 Temasek Boulevard 038987	
6.4 km	Suntec City Tower Two @ Singapore, 9 Temasek Boulevard 038989	
6.5 km	Suntec City Mall @ Singapore, 3 Temasek Boulevard 038983	
6.5 km	POSB ATM (Suntec City Mall - Ba @ Singapore	



Select a result from the list.



Dist	Name	Page 1 of 15
	ver One ek Boulevard 038987	
	ver Two ek Boulevard 038989	
	ntec City Mall - Ba	



Tap on Option for more options.

Menu Options

View on Map:

View selected result on map.

New Search:

Start a new search.

Add to My Points:

Add selected result to My Point list

Sorting: Sort results by Name or Distance

Navigation>Set Start: Set selected result as navigation start point.

Navigation>Set Destination: Set selected result as navigation end point.

Send Point: Share by sending selected waypoint to another NAVFone user. It is send via SMS. Normal SMS charges apply.



5. Routing & Navigation

5.1 Route Planning

A start point and a destination must be clearly defined to successfully plan a route. In NAVFone, there are a few ways to set the start point and destination.

5.1.1 Set Start Position

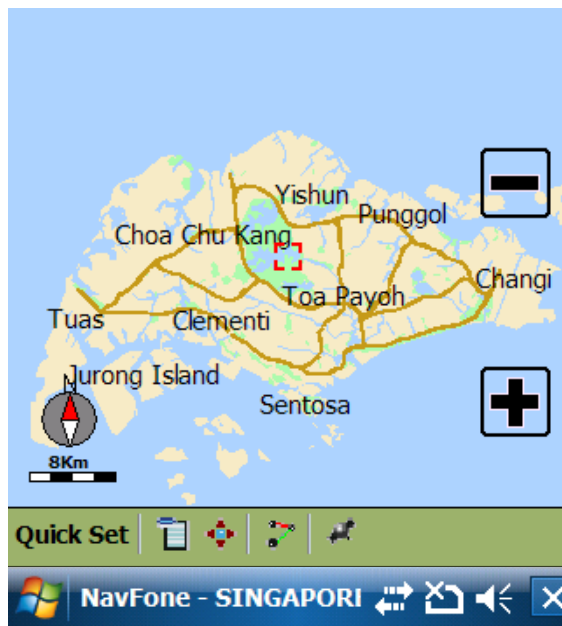
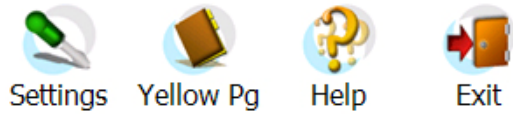
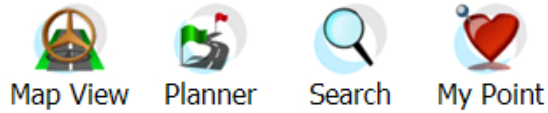
Via GPS Position (Recommended)	The start position will be the current GPS location.
Via Search	Use the search menu for location lookup
Via My Point	Choose from the waypoints in the My Point Manager.

5.1.2 Set Destination

Via Search	Use the search menu for location lookup
Via My Point	Choose from the waypoints in the My Point Manager.

6. GPS

6.1 Managing GPS Connection



Connection Option

Comm Port

Baud Rate



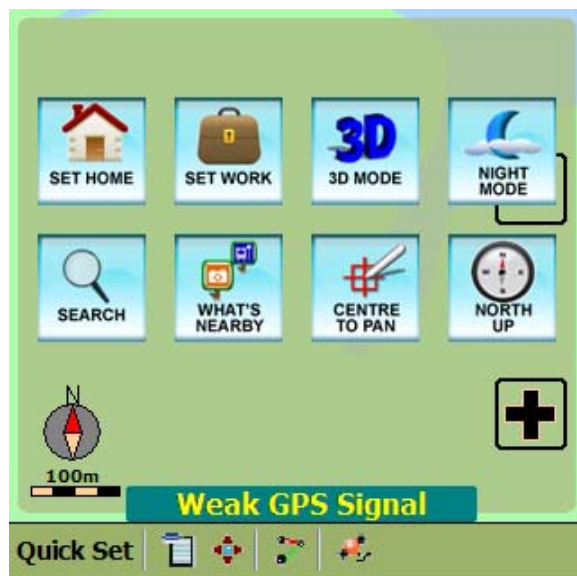
Goto Main Menu > Map View

Tap on the  button.

Select Auto Detect and the Tap on Connect.



Once the countdown stops, NAVFone will access the GPS receiver to connect to GPS.




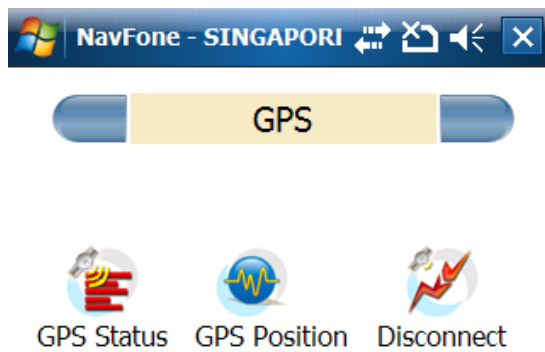
Tap on the  button to always display your current GPS position on the map.

6.2 GPS Option

The feature will display the GPS status information based on data received from the GPS receiver.

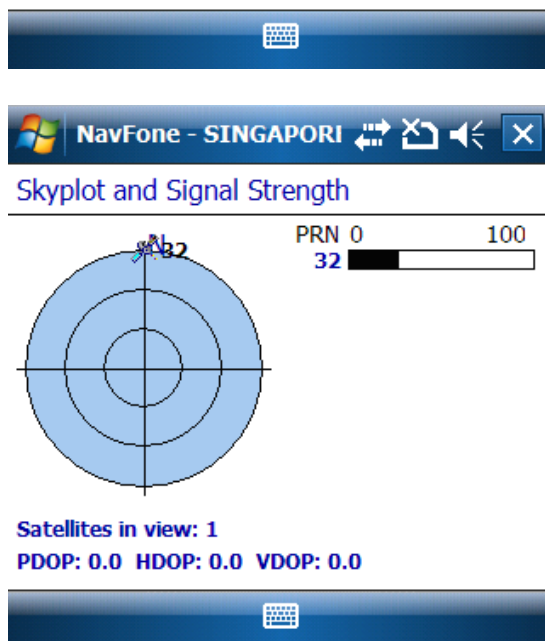


Tap on the  button when GPS is already connected.



3 options are available;

- GPS Status
- GPS Position
- Disconnect



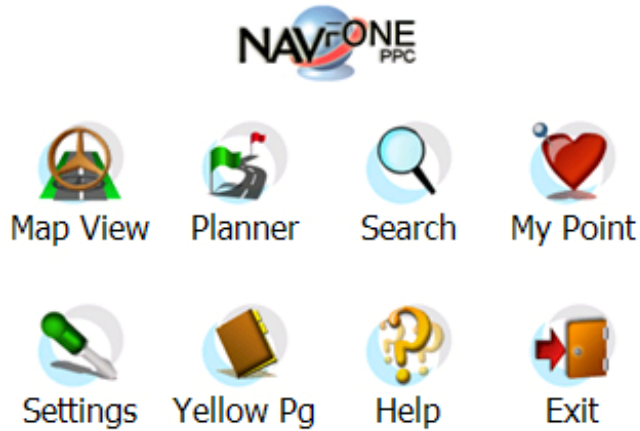
GPS > GPS Status

Tap on GPS Status to view the Skyplot & Signal Strength.

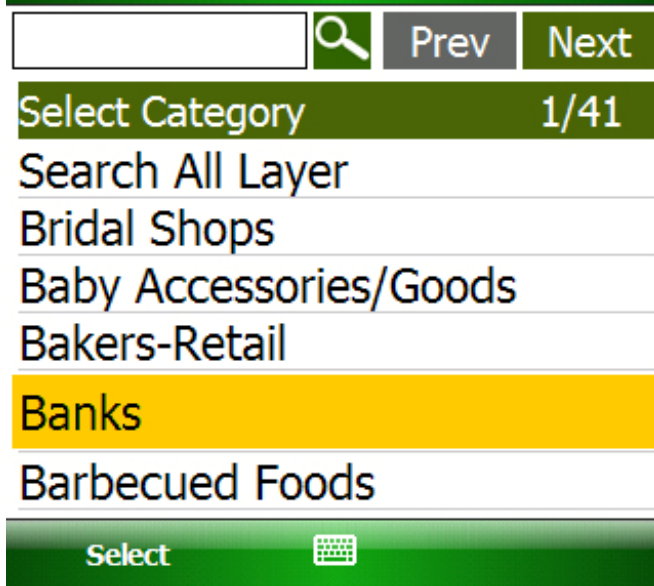
7. Yellow Pages



Go to [Main Menu > Yellow Pg](#)



From Search, user may select search by category shown.



To see all results, select **Search All Layers**.



POSB

State/City Singapore

District Singapore



POSB Prev Next

Dist Name 1/1

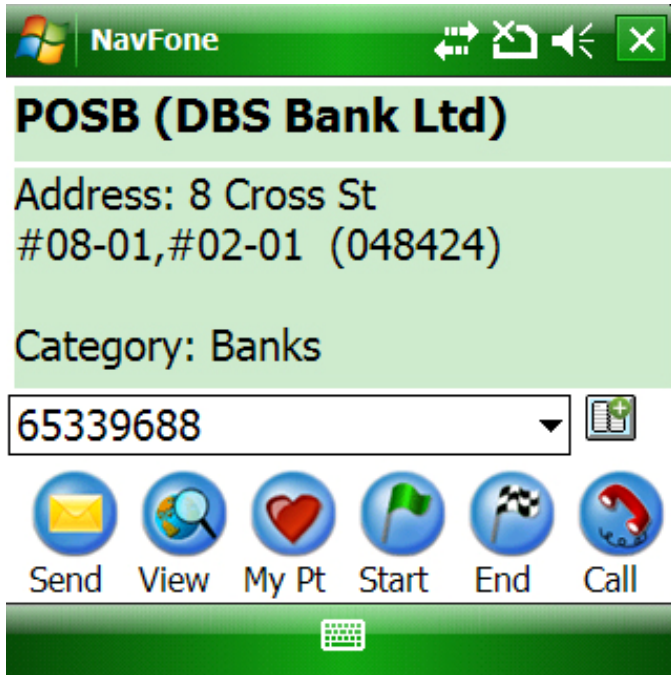
7.7 POSB (DBS Bank Ltd)
km @ Singapore, Cross St



Once the category selected, enter a keyword.

Tap on Search.

Select a result from the list.



To see the details, select **View Detail**.



Send

Share by sending the address to another NAVFone user. It is send via SMS. Normal SMS charges apply.



View

View selected result on map.



My Pt

Add selected result to My Point list



Start

Set selected result as navigation start point.



End

Set selected result as navigation end point.



Call

Call the listed number



Saves the listed number to the address book